

150V 10.5mohm N-channel SGT MOSFET

AKG15N105PM

Description:

This N channel SGT MOSFET has been designed to very low on-state resistance and superior UIS performance, especially for Motor Drivers application.

Features:

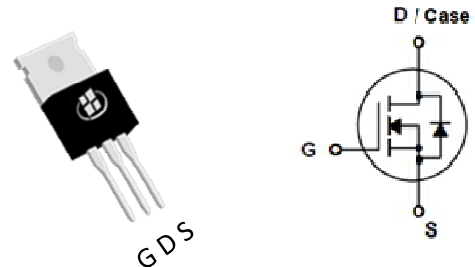
- LOW $R_{DS(ON)}$
- RoHS compliant (Note 1)
- Halogen-free (Note 1)
- 100% UIS tested

Applications:

- Battery Management System
- Motor Drivers
- DC-DC Converter

Key Performance Parameters:

Parameter	Value	Unit
V_{DS}	150	V
$R_{DS(ON), max} @V_{GS} = 10 V$	10.5	m Ω
I_D	80	A



Ordering Information:

Ordering Code	Package Type	Marking Code	Form	Packing
AKG15N105PM	TO-220	G15N105PM	Tube	1000PCS

Notes:

1. Contact ALKAIDSEMI sales for detail information

Maximum Ratings (T_A = 25°C unless otherwise noted)

Symbol	Parameter	Value	Units
V _{DS}	Drain-Source Voltage	150	V
I _D	Drain Current - Continuous (T _C = 25°C) ^(Note 1)	80	A
	Drain Current - Continuous (T _C = 100°C)	50	A
I _{DM}	Drain Current - Pulsed ^(Note 2)	320	A
V _{GS}	Gate-Source Voltage	± 20	V
E _{AS}	Single Pulsed Avalanche Energy ^(Note 3)	324	mJ
P _D	Power Dissipation (T _C = 25°C)	150	W
T _J , T _{STG}	Operating and Storage Temperature Range	-55 to +150	°C

Thermal Characteristics

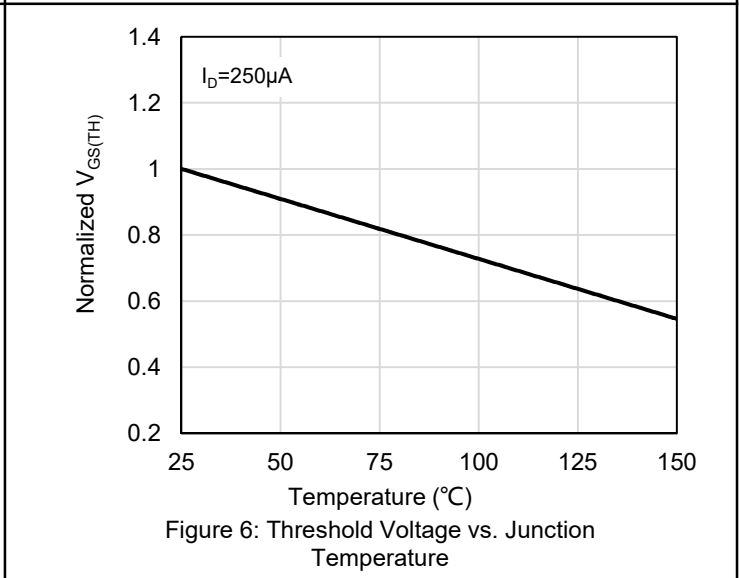
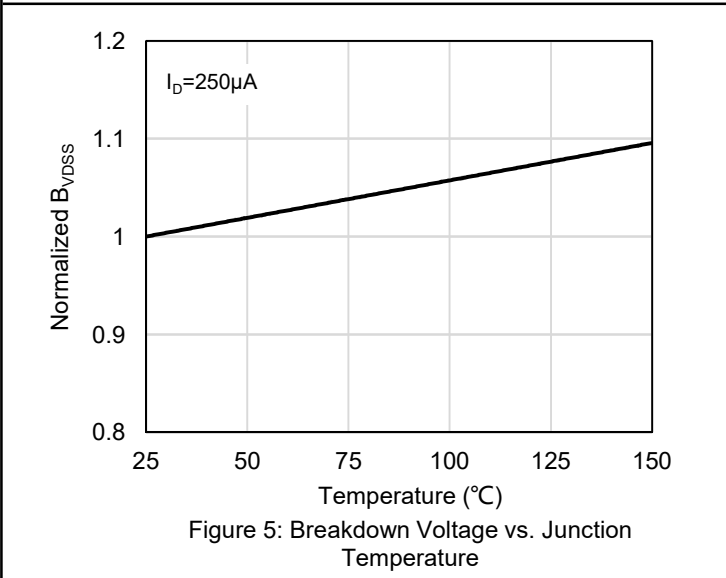
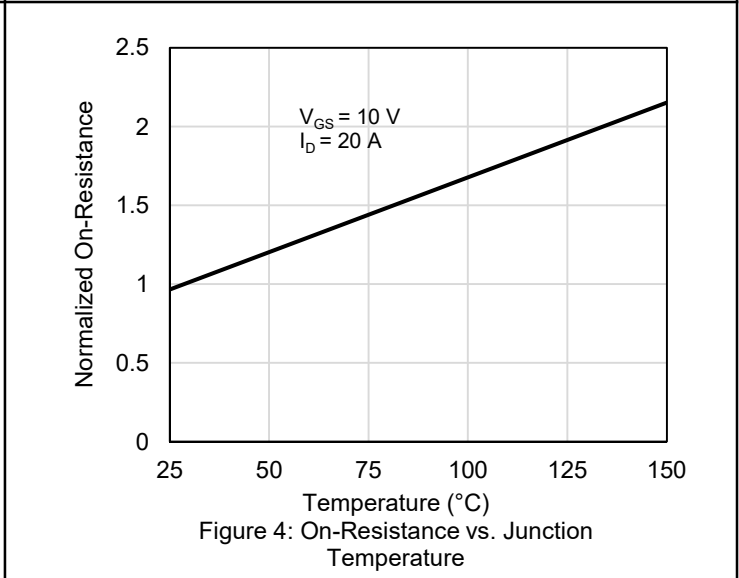
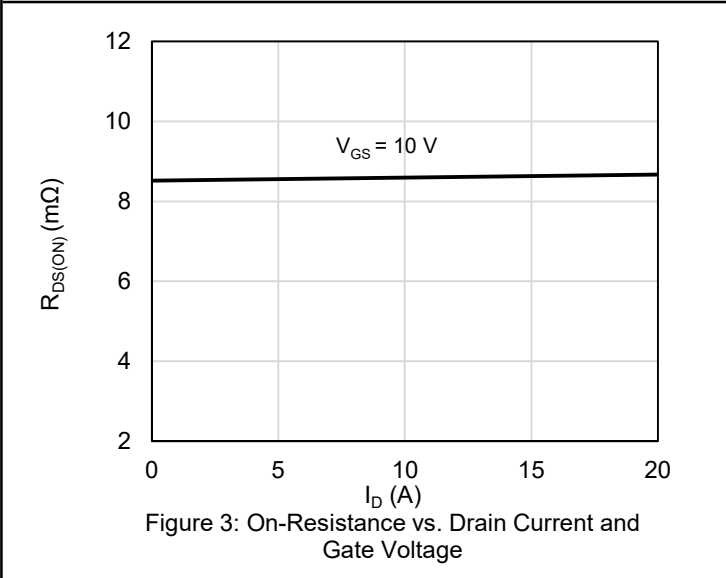
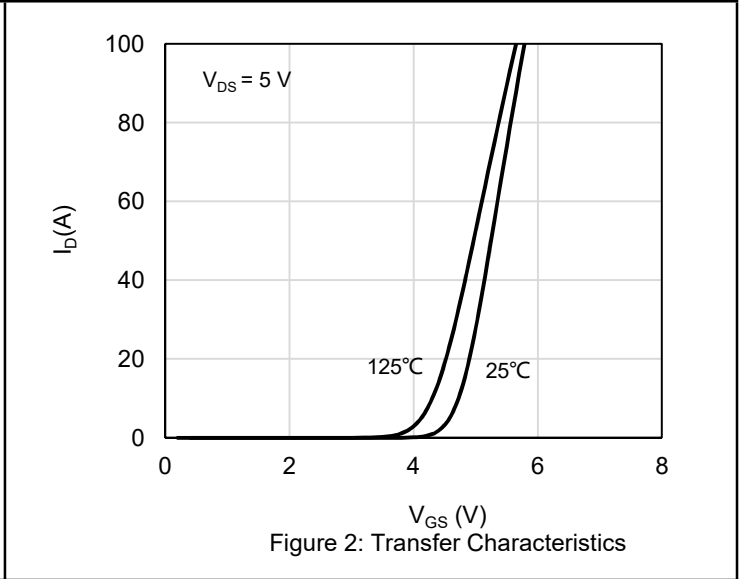
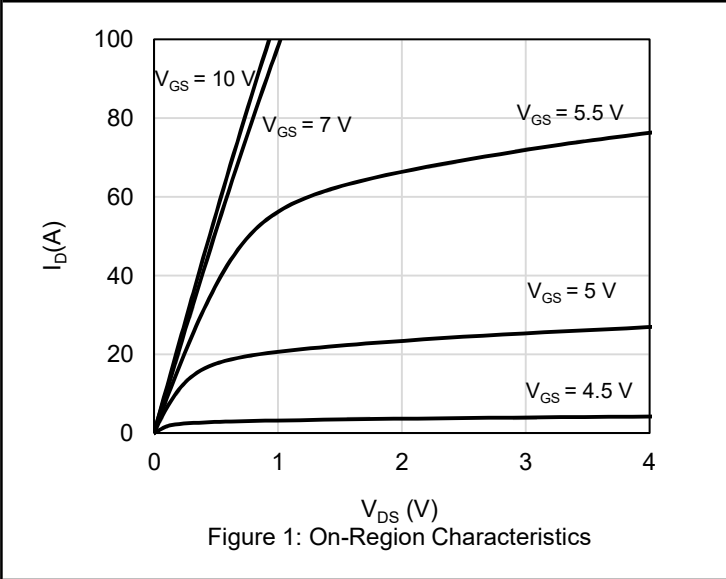
Symbol	Parameter	Value	Units
R _{θJC}	Thermal Resistance, Junction-to-Case, Steady-State	0.8	°C/W
R _{θJA}	Thermal Resistance, Junction-to-Ambient, Steady State ^(Note 4)	45	°C/W

Notes:

1. The max drain current rating is silicon limited
2. Repetitive Rating: Pulse width limited by maximum junction temperature
3. L = 0.5 mH, V_{DD} = 50 V, I_{AS} = 36 A, R_G = 25 Ω, Starting T_J = 25 °C
4. Mount on minimum PCB layout

Electrical Characteristics ($T_J = 25^\circ\text{C}$ unless otherwise noted)						
Symbol	Parameter	Test Conditions	Min	Typ	Max	Units
Static Characteristics						
BV_{DSS}	Drain-Source Breakdown Voltage	$V_{GS} = 0\text{ V}, I_D = 250\ \mu\text{A}$	150			V
I_{DSS}	Zero Gate Voltage Drain Current	$V_{DS} = 150\text{ V}, V_{GS} = 0\text{ V}$			1	μA
I_{GSS}	Gate Leakage Current	$V_{GS} = \pm 20\text{ V}, V_{DS} = 0\text{ V}$			± 100	nA
$V_{GS(TH)}$	Gate Threshold voltage	$V_{DS} = V_{GS}, I_D = 250\ \mu\text{A}$	2	3	4	V
$R_{DS(ON)}$	Drain-Source on-state resistance	$V_{GS} = 10\text{ V}, I_D = 20\text{ A}$		8.7	10.5	m Ω
Dynamic Characteristics						
C_{ISS}	Input Capacitance	$V_{DS} = 75\text{ V}, V_{GS} = 0\text{ V},$ $F = 1\text{ MHz}$		3690		pF
C_{OSS}	Output Capacitance			320		pF
C_{RSS}	Reverse Transfer Capacitance			15		pF
R_G	Gate Resistance	$F = 1\text{ MHz}$		1.2		Ω
Switching Characteristics						
$T_{D(ON)}$	Turn On Delay Time	$V_{DD} = 75\text{ V}, R_L = 3.8\ \Omega,$ $V_{GS} = 10\text{ V}, R_G = 6.8\ \Omega$		23		nS
T_R	Rise Time			40		nS
$T_{D(OFF)}$	Turn Off Delay Time			48		nS
T_F	Fall Time			22		nS
Q_G	Total Gate Charge	$V_{DD} = 75\text{ V}, I_D = 20\text{ A},$ $V_{GS} = 10\text{ V}$		51		nC
Q_{GS}	Gate-Source Charge			18		nC
Q_{GD}	Gate-Drain Charge			10		nC
Drain-Source Diode Characteristics and Maximum Ratings						
I_S	Maximum Continuous Body-Diode Forward Current				80	A
I_{SM}	Maximum Pulsed Body-Diode Forward Current ^(NOTE 1)				320	A
V_{SD}	Diode Forward Voltage	$V_{GS} = 0\text{ V}, I_S = 1\text{ A}$		0.68		V
T_{RR}	Reverse Recovery Time	$V_{DD} = 75\text{ V}, I_D = 20\text{ A},$ $di/dt = 100\text{ A}/\mu\text{S}$		86		nS
Q_{RR}	Reverse Recovery Charge			265		nC
I_{RRM}	Peak Reverse Recovery Current			5		A

Electrical Characteristics Diagrams



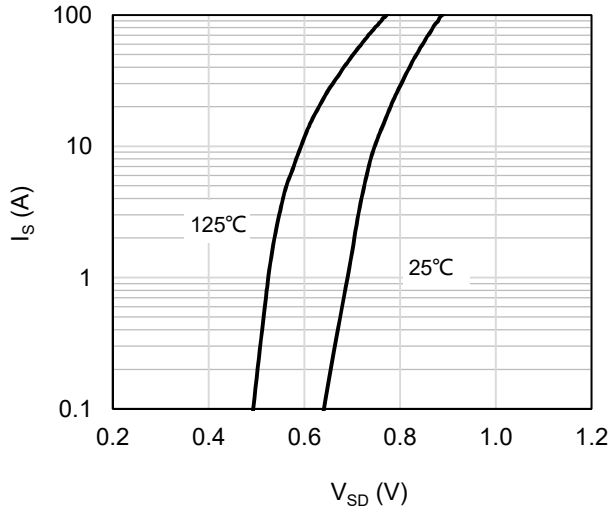


Figure 7: Body-Diode Characteristics

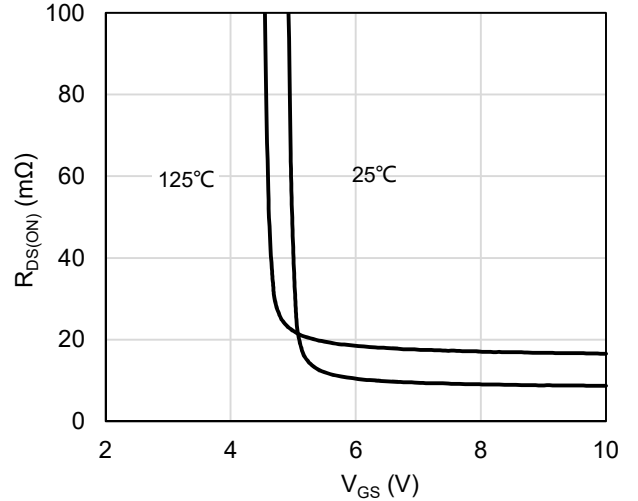


Figure 8: On-Resistance vs. Gate-Source Voltage

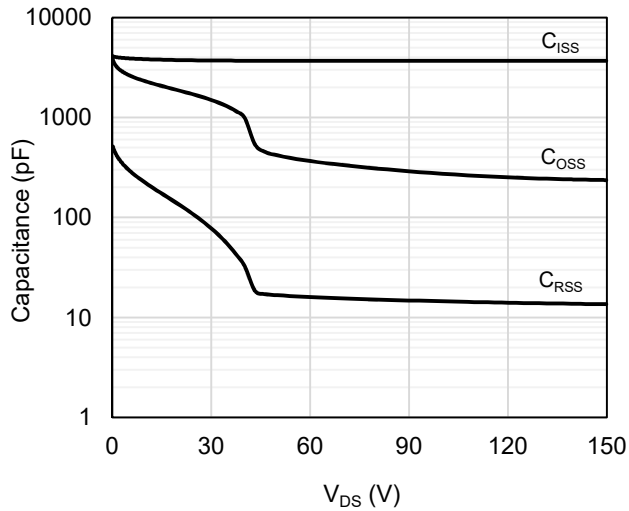


Figure 9: Capacitance Characteristics

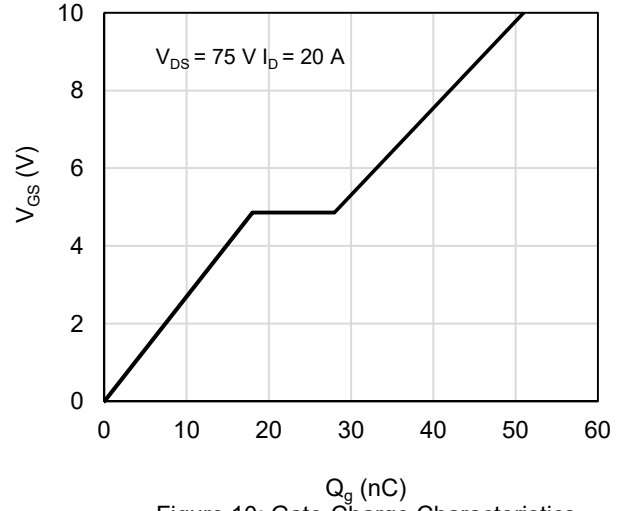


Figure 10: Gate-Charge Characteristics

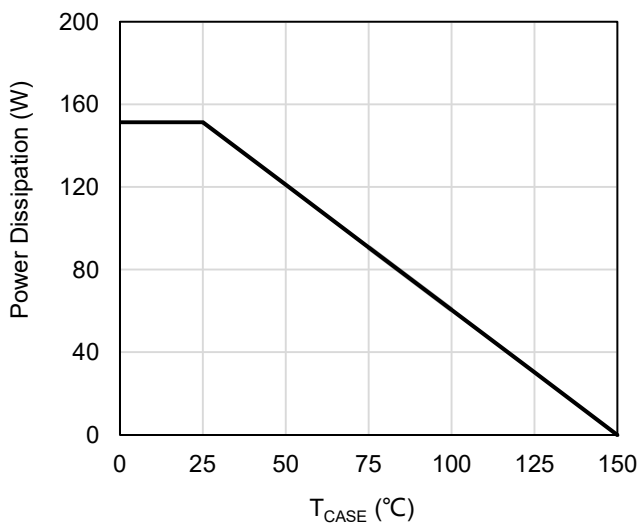


Figure 11: Power De-rating

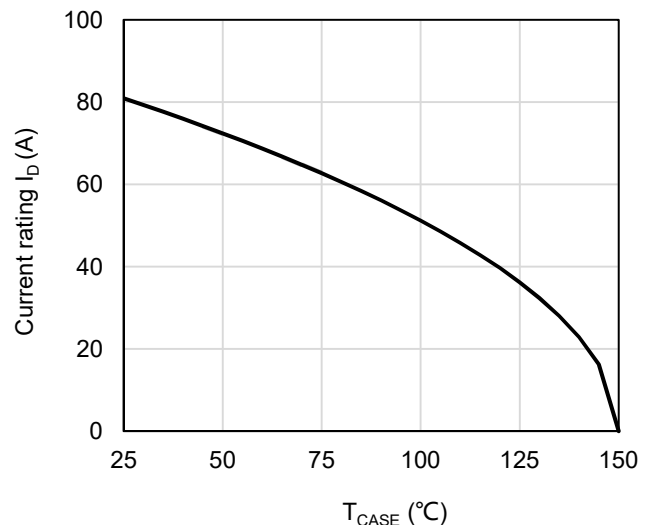


Figure 12: Current De-rating

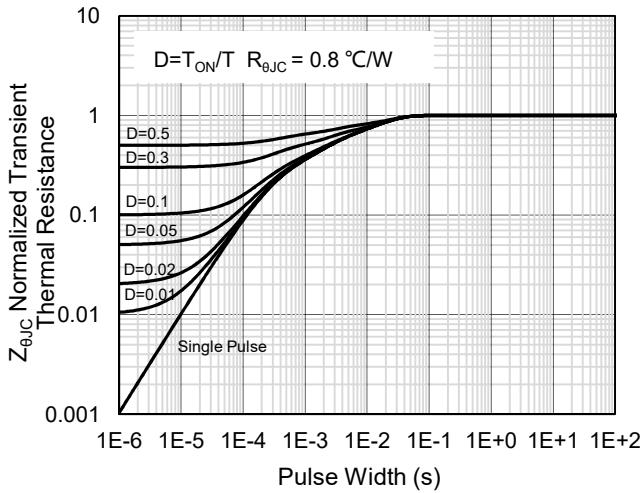


Figure 13: Normalized Maximum Transient Thermal Impedance

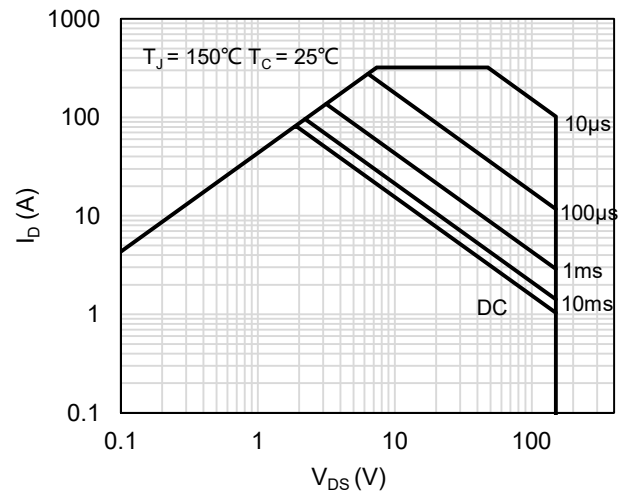
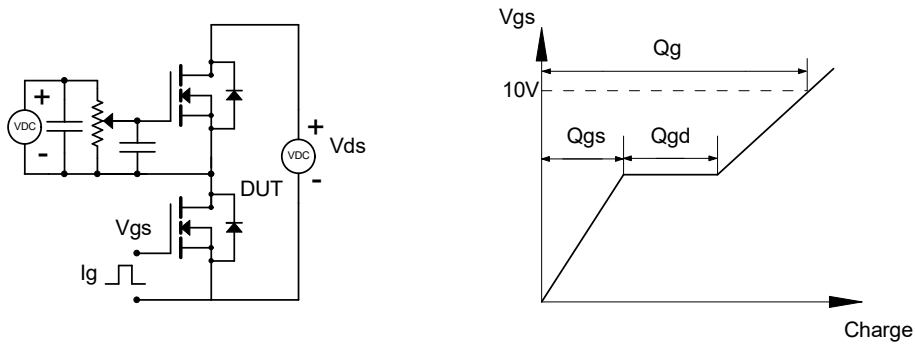


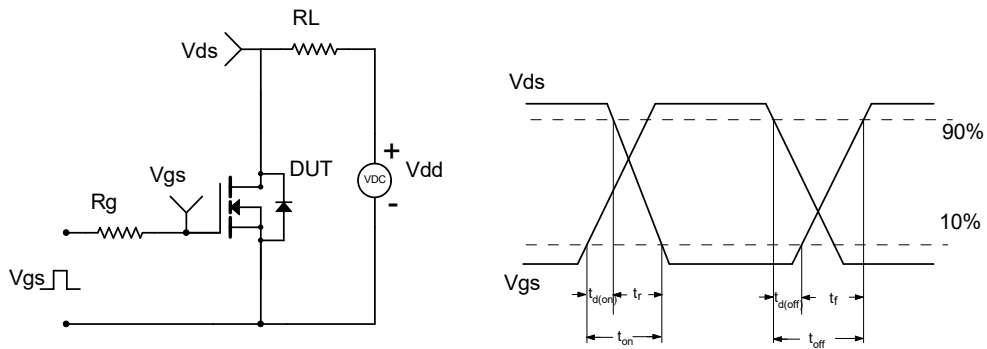
Figure 14: Maximum Forward Biased Safe Operating Area

Test Circuit and Waveform

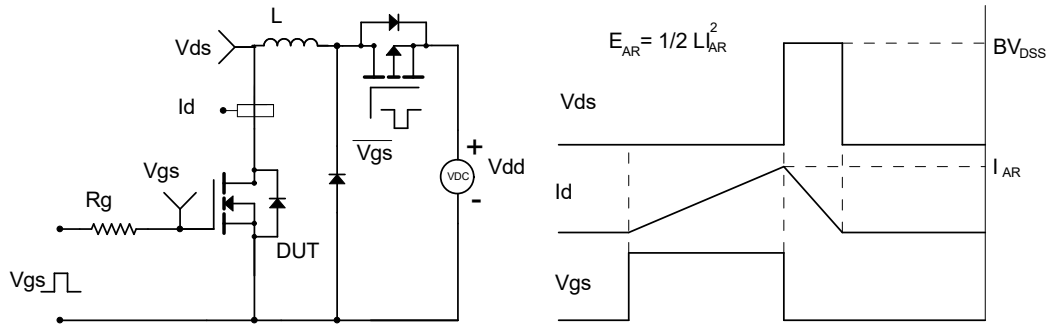
Gate Charge Test Circuit & Waveform



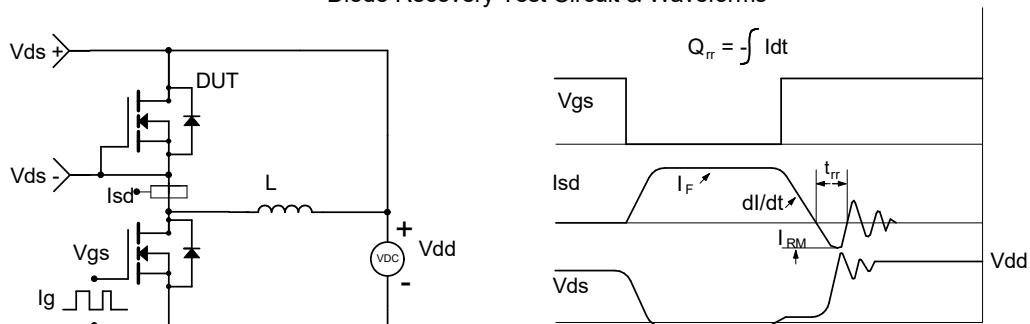
Resistive Switching Test Circuit & Waveforms



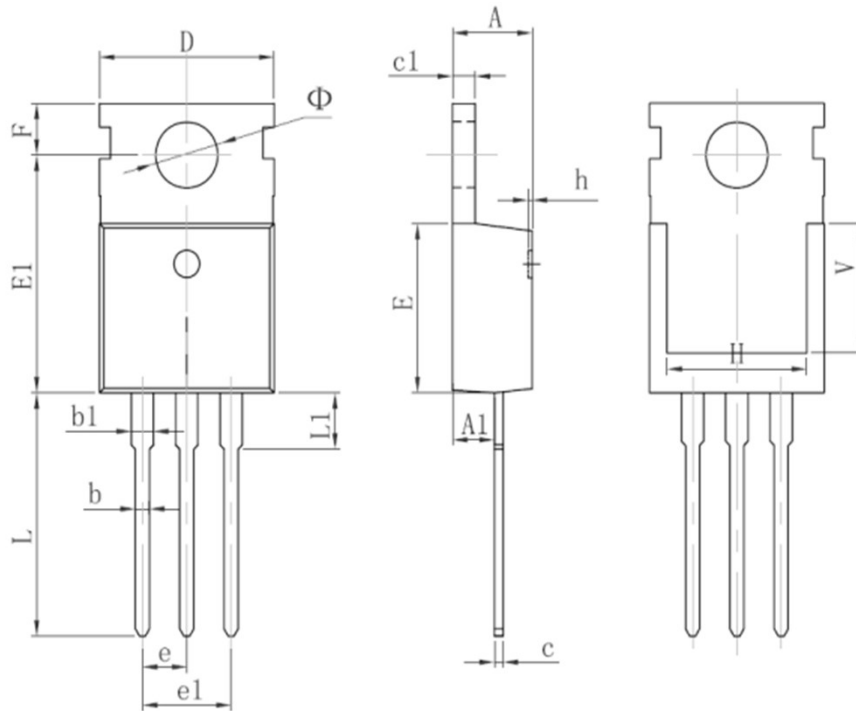
Unclamped Inductive Switching (UIS) Test Circuit & Waveforms



Diode Recovery Test Circuit & Waveforms



Package Outlines



Symbol	Dimensions In Millimeters		Dimensions In Inches	
	Min.	Max.	Min.	Max.
A	4.400	4.600	0.173	0.181
A1	2.250	2.550	0.089	0.100
b	0.710	0.910	0.028	0.036
b1	1.170	1.370	0.046	0.054
c	0.330	0.650	0.013	0.026
c1	1.200	1.400	0.047	0.055
D	9.910	10.250	0.390	0.404
E	8.950	9.750	0.352	0.384
E1	12.650	13.050	0.498	0.514
e	2.540 TYP.		0.100 TYP.	
e1	4.980	5.180	0.196	0.204
F	2.650	2.950	0.104	0.116
H	7.900	8.100	0.311	0.319
h	0.000	0.300	0.000	0.012
L	12.900	13.400	0.508	0.528
L1	2.850	3.250	0.112	0.128
V	6.900 REF.		0.276 REF.	
Φ	3.400	3.800	0.134	0.150

Marking Information



Note:

G15N105PM = Product Name Code

KYWWZZZ = Date code

Contact ALKAIDSEMI sales for detail information

Revision History

Revision	Release Date	Remark
Rev.1.0	2022/7/13	Initial Release

Disclaimer

The information given in this document describes the independent performance of the product, but similar performance is not guaranteed under other working conditions, and cannot be guaranteed when installed with other products or equipment. To achieve the required performance of the product in actual scenarios, the customer should conduct a complete application test to assess the functionality of the product.

Alkaidsemi assumes no responsibility for equipment failures result from using products at values that exceed the ratings, operating conditions, or other parameters listed in the product specifications.

The product described in this specification is not applicable for aerospace or other applications which requires high reliability. Customers using or selling these products for use in medical, life-saving, or life-sustaining applications do so at their own risk and agree to fully indemnify.

Due to product or technical improvements, the information described or contained herein may be changed without prior notice.